



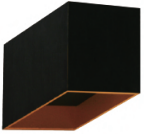
greenlux
cost reduction LED lighting

LED Indoor Wall Light Catalogue

Contents

Allure Series GKALL

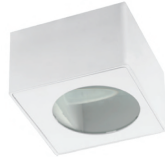
Square



S1



S2



S3



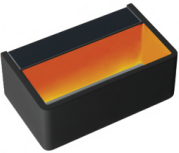
S4

Boomerang



B

Rectangle



R1



R2



R3

Triangle



T

Round



RO1



RO2

Linear



L300-L1 / L600-L1



L1040-L2

Cylinder



C1



C2



C3



C4



C5



C6



C7 / C8

Vantage Series GCVAN



01



02



Notte Series GONOT

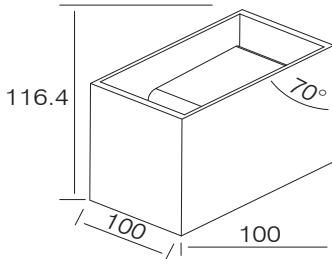




greenlux
cost reduction LED lighting

Allure Square Indoor LED Wall Light

GKALL-6W-S1

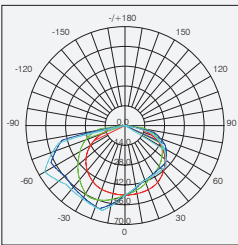


Standard Mechanical Parameters

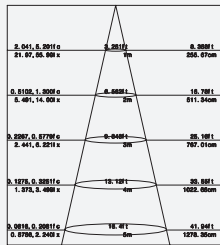
MAIN BODY MATERIAL: ALUMINIUM DIE-CASTING
SURFACE FINISH: MW RAL9016
IP: 20
DIMENSION: 100X100X116MM

Housing Color:

- Matte White
- Matte Grey
- Matte Black



GKALL-6W-S1-3000K-100°



Photometric files for other CCT & beam are available



Standard Optical & Electrical Characteristics

LED BRAND: CREE
DRIVER BRAND: AREEK
INPUT: 110-230V AC 50/60HZ
CCT: 3000K/4000K/5000K
CRI: > 80
POWER: 6W (2*3W)
LED OUTPUT: 180LM
BEAM: 100°

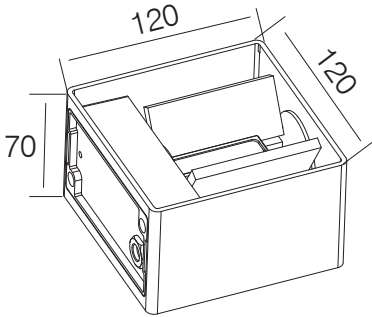




greenlux
cost reduction LED lighting

Allure Square Indoor LED Wall Light

GKALL-8W-S2



Standard Mechanical Parameters

MAIN BODY MATERIAL: ALUMINIUM DIE-CASTING
SURFACE FINISH: MW RAL 9016
IP: 20 / 54 / 65
DIMENSION: 120X120X70MM

Housing Color:

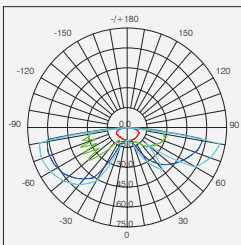
- Matte White
- Matte Grey
- Matte Black

HIGH CRI	>80 >90	CCT	3000K 4000K	BEAM	100°
----------	------------	-----	----------------	------	------

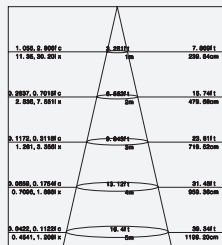


Standard Optical & Electrical Characteristics

LED BRAND: HONGLI
DRIVER BRAND: AREEK
INPUT: 110-230V AC 50/60HZ
CCT: 3000K
CRI: > 80
LED OUTPUT: 225LM
POWER: 8W (2*4W)
BEAM: 100°



GKALL-8W-S2-3000K-100°

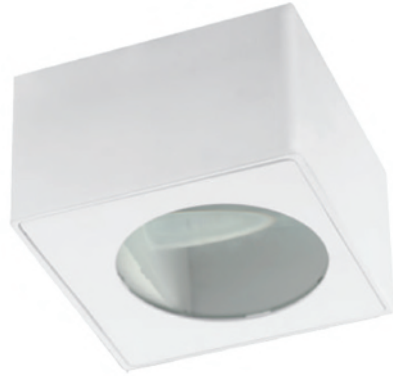
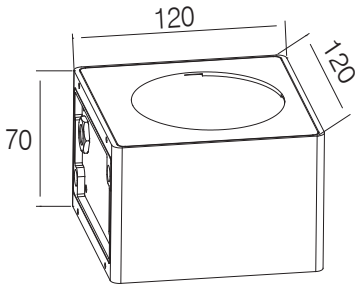


Photometric files for other CCT & beam are available



Allure Square Indoor LED Wall Light

GKALL-8W-S3



Standard Mechanical Parameters

MAIN BODY MATERIAL: ALUMINIUM DIE-CASTING
SURFACE FINISH: MW RAL9016
IP: 20 / 54 / 65
DIMENSION: 120X120X70MM

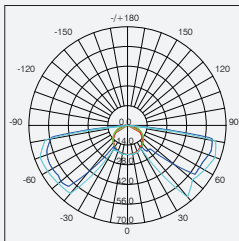
Housing Color:

- Matte White
- Matte Grey
- Matte Black

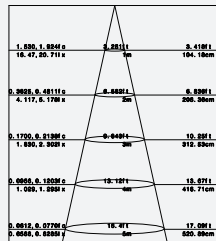


Standard Optical & Electrical Characteristics

LED BRAND: HONGLI
DRIVER BRAND: AREEK
INPUT: 110-230V AC 50/60HZ
CCT: 3000K
CRI: > 80
LED OUTPUT: 200LM
POWER: 8W (2*4W)
BEAM: 100°



GKALL-8W-S3-3000K-100°



Photometric files for other CCT & beam are available

RCM

SAA

IES

TUV

CE

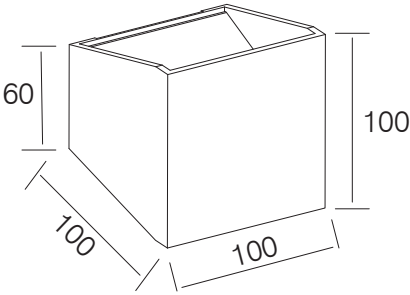
RoHS



greenlux
cost reduction LED lighting

Allure Square Indoor LED Wall Light

GKALL-4W-S4

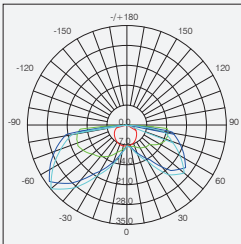


Standard Mechanical Parameters

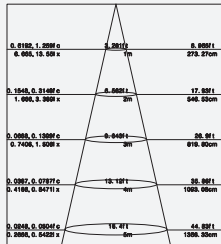
MAIN BODY MATERIAL: ALUMINIUM DIE-CASTING
SURFACE FINISH: MW RAL 9016
IP: 20
DIMENSION: 100X100X100MM

Housing Color:

- Matte White
- Matte Grey
- Matte Black



GKALL-4W-S4-3000K-100°



Photometric files for other CCT & beam angle are available



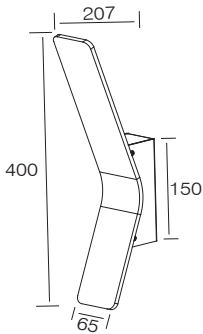
Standard Optical & Electrical Characteristics

LED BRAND: CREE
DRIVER BRAND: AREEK
INPUT: 110-230V AC 50/60HZ
CCT: 3000K
CRI: > 80
LED OUTPUT: 250LM
POWER: 4W (2*2W)
BEAM: 100°



Allure Boomerang Indoor LED Wall Light

GKALL-15W-B



Standard Mechanical Parameters

MAIN BODY MATERIAL: ALUMINIUM DIE-CASTING
SURFACE FINISH: MW RAL9016
IP: 20
DIMENSION: 65X400MM

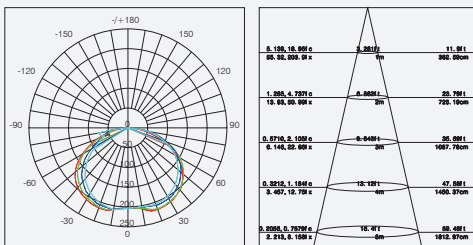
Housing Color:

- Matte White
- Matte Grey
- Matte Black



Standard Optical & Electrical Characteristics

LED BRAND: BRIDGELUX
INPUT: 110-230V AC 50/60HZ
CCT: 3000K
CRI: > 80
LED OUTPUT: 1000LM
POWER: 15W
BEAM: 25°



GKALL-15W-B-3000K-25°

Photometric files for other CCT & beam are available

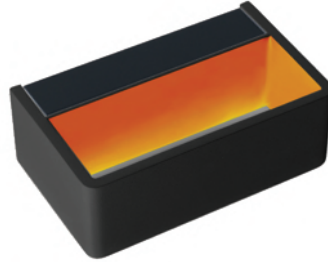
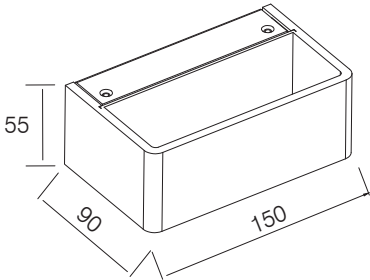




greenlux
cost reduction LED lighting

Allure Rectangle Indoor LED Wall Light

GKALL-12W-R1



Standard Mechanical Parameters

MAIN BODY MATERIAL: ALUMINIUM DIE-CASTING
SURFACE FINISH: MW RAL9016
IP: 20
DIMENSION: 150X90X55MM

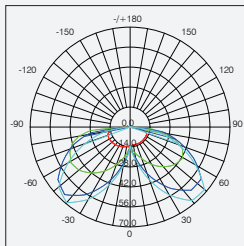
Housing Color:

- Matte White
- Matte Grey
- Matte Black

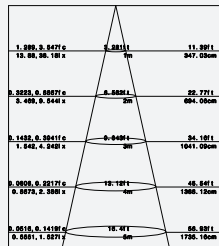


Standard Optical & Electrical Characteristics

LED BRAND: CREE
DRIVER BRAND: AREEK
INPUT: 110-230V AC 50/60HZ
CCT: 3000K/4000K/5000K
CRI: > 80
POWER: 12W (2*6W)
LED OUTPUT: 500LM
BEAM: 130°



GKALL-12W-R1-3000K-130°



Photometric files for other CCT & beam are available

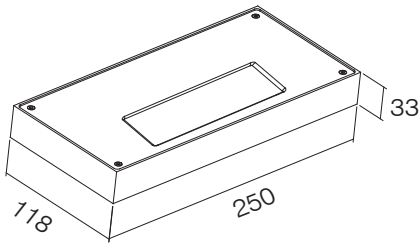




greenlux
cost reduction LED lighting

Allure Rectangle Indoor LED Wall Light

GKALL-10W-R2

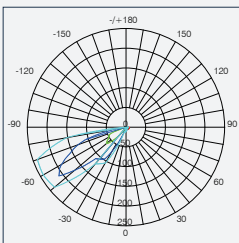


Standard Mechanical Parameters

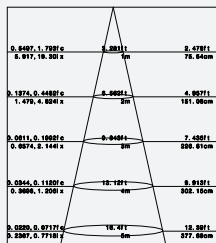
MAIN BODY MATERIAL: ALUMINIUM DIE-CASTING
SURFACE FINISH: MW RAL 9016
IP: 20
DIMENSION: 250X118X33MM

Housing Color:

- Matte White
- Matte Grey
- Matte Black



GKALL-10W-R2-3000K-65°



Photometric files for other CCT & beam are available



Standard Optical & Electrical Characteristics

LED BRAND: LUMENMAX
DRIVER BRAND: AREEK
INPUT: 110-230V AC 50/60HZ
CCT: 3000K
CRI: > 80
LED OUTPUT: 380LM
POWER: 10W (2*5W)
BEAM: 65°

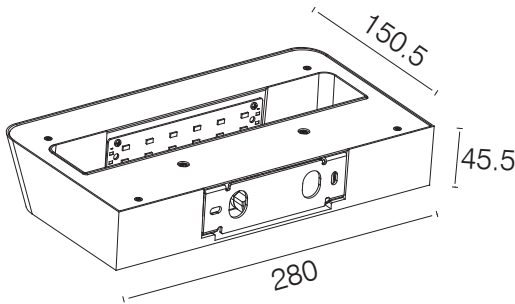




greenlux
cost reduction LED lighting

Allure Rectangle Indoor LED Wall Light

GKALL-8W-R3

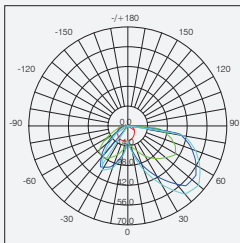


Standard Mechanical Parameters

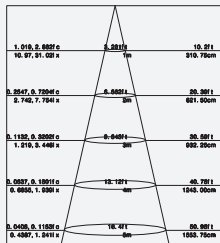
MAIN BODY MATERIAL: ALUMINIUM DIE-CASTING
SURFACE FINISH: MW RAL9016
IP: 20
DIMENSION: 280X150.5X45.5MM

Housing Color:

- Matte White
- Matte Grey
- Matte Black



GKALL-8W-R3-3000K-130°



Photometric files for other CCT & beam are available



Standard Optical & Electrical Characteristics

LED BRAND: LUMENMAX
DRIVER BRAND: AREEK
INPUT: 110-230V AC 50/60HZ
CCT: 3000K
CRI: > 80
LED OUTPUT: 440LM
POWER: 8W (2*4W)
BEAM: 130°

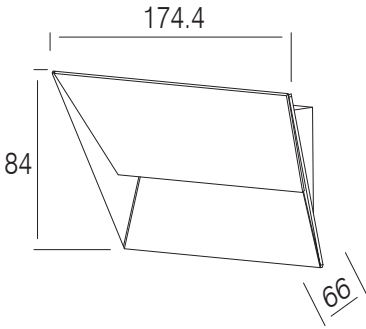




greenlux
cost reduction LED lighting

Allure Triangle Indoor LED Wall Light

GKALL-6W-T



Standard Mechanical Parameters

MAIN BODY MATERIAL: ALUMINIUM DIE-CASTING

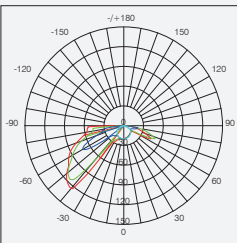
SURFACE FINISH: MW RAL 9016

IP: 20

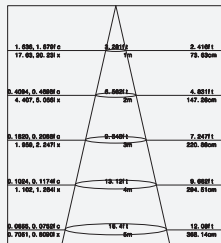
DIMENSION: 174.4X66X84MM

Housing Color:

- Matte White
- Matte Grey
- Matte Black



GKALL-6W-T-3000K-25°



Photometric files for other CCT & beam are available



Standard Optical & Electrical Characteristics

LED BRAND: CREE

DRIVER BRAND: AREEK

INPUT: 110-240V AC 50/60HZ

CCT: 3000K

CRI: > 80

LED OUTPUT: 350LM

POWER: 6W (2*3W)

BEAM: 25°

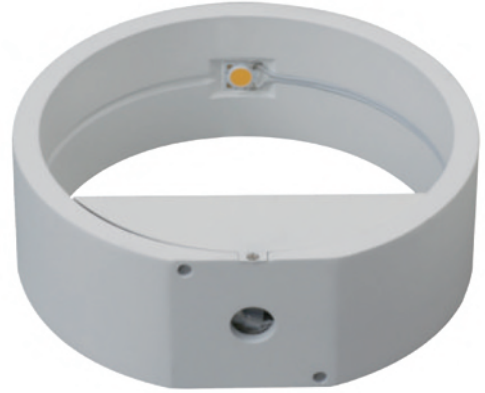
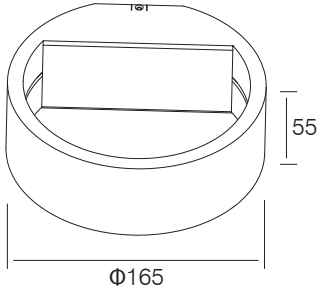




greenlux
cost reduction LED lighting

Allure Round Indoor LED Wall Light

GKALL-8W-RO1



Standard Optical & Electrical Characteristics

LED BRAND: BRIDGELUX
DRIVER BRAND: AREEK
INPUT: 110-240V AC 50/60HZ
CCT: 3000K
CRI: > 80
LED OUTPUT: 700LM
POWER: 8W (2*4W)
BEAM: 25°

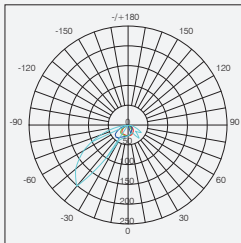
Housing Color:

- Matte White
- Matte Grey
- Matte Black



Standard Mechanical Parameters

MAIN BODY MATERIAL: ALUMINIUM DIE-CASTING
SURFACE FINISH: MW RAL 9016
IP: 20
DIMENSION: $\Phi 165 \times 55 \text{MM}$



GKALL-8W-RO1-3000K-100°

Beam Angle	Beam Diameter	Beam Area	Beam Length
25°	165mm	21200mm ²	1000mm
30°	198mm	38800mm ²	1200mm
35°	231mm	67600mm ²	1400mm
40°	264mm	105600mm ²	1600mm
45°	297mm	154000mm ²	1800mm
50°	330mm	212400mm ²	2000mm
55°	363mm	280800mm ²	2200mm
60°	396mm	359200mm ²	2400mm
65°	429mm	447600mm ²	2600mm
70°	462mm	546000mm ²	2800mm
75°	495mm	654400mm ²	3000mm
80°	528mm	772800mm ²	3200mm
85°	561mm	901200mm ²	3400mm
90°	594mm	1040000mm ²	3600mm

Photometric files for other CCT & beam are available

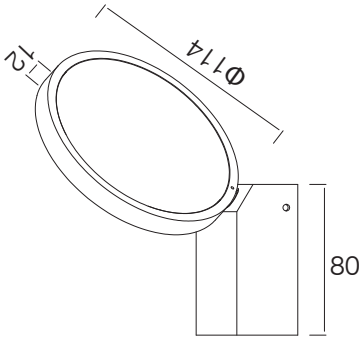




greenlux
cost reduction LED lighting

Allure Round Indoor LED Wall Light

GKALL-10W-RO2

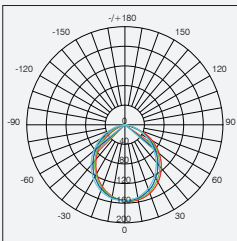


Standard Mechanical Parameters

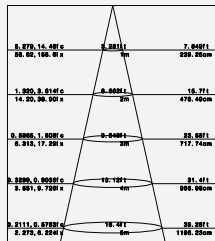
MAIN BODY MATERIAL: ALUMINIUM DIE-CASTING
SURFACE FINISH: MW RAL 9016
IP: 20
DIMENSION: $\Phi 114 \times 12 \text{MM}$

Housing Color:

- Matte White
- Matte Grey
- Matte Black



WL548-10W-RO2-3000K-90°



Photometric files for other CCT & beam are available



Standard Optical & Electrical Characteristics

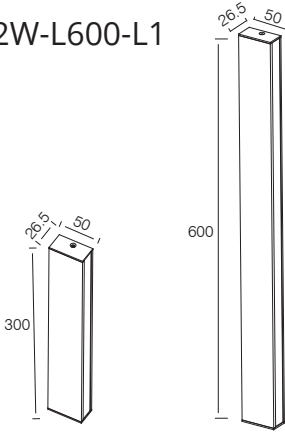
LED BRAND: EDISON
DRIVER BRAND: AREEK
INPUT: 110-230V AC 50/60HZ
CCT: 3000K
CRI: > 80
LED OUTPUT: 460LM
POWER: 10W (2*5W)
BEAM: 90°



Allure Linear Indoor LED Wall Light

GKALL-12W-L300-L1

GKALL-22W-L600-L1



Standard Mechanical Parameters

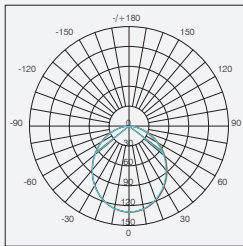
MAIN BODY MATERIAL: ALUMINIUM DIE-CASTING

SURFACE FINISH: MW RAL9016

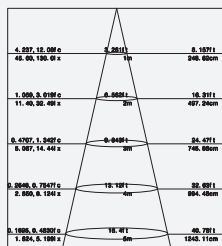
IP: 20

Housing Color:

- Matte White
- Matte Grey
- Matte Black



GKALL-11W-L1-3000K-110°



Photometric files for other CCT & beam angles are available



Standard Optical & Electrical Characteristics

LED BRAND: EVERLIGHT

DRIVER BRAND: AREEK

INPUT: 110-230V AC 50/60HZ

CCT: 3000K/4000K/5000K

CRI: > 80

BEAM: 110°

ITEM NO.	POWER	CHIPSET	LUMEN	BEAM ANGLE	DIMENSIONS	IP RATING	CRI
GKALL-12W-L300-L1	2*6W	SMD	830LM	110°	300x50x26.5mm	IP20	>80
GKALL-22W-L600-L1	2*11W	SMD	1600LM	110°	600x50x26.5mm	IP20	>80



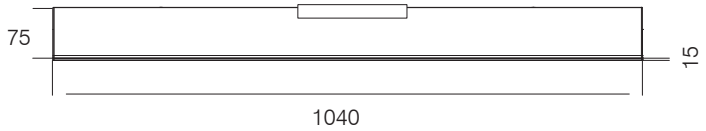


greenlux
cost reduction LED lighting

Allure Linear Indoor LED Wall Light



GKALL-20W-L1040-L2



Standard Mechanical Parameters

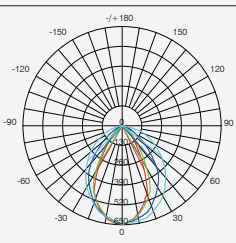
MAIN BODY MATERIAL: ALUMINIUM DIE-CASTING
SURFACE FINISH: MW RAL 9016
IP: 20
DIMENSION: 1040X15XH75MM

Housing Color:

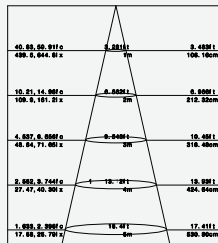
- Matte White
- Matte Grey
- Matte Black



HIGH CRI	>80	CCT	3000K 4000K	BEAM	73°
----------	-----	-----	----------------	------	-----



GKALL-20W-L1040-L2-3000K-73°



Photometric files for other CCT & beam are available



Standard Optical & Electrical Characteristics

LED BRAND: EVERLIGHT
DRIVER BRAND: AREEK
INPUT: 110-230V AC 50/60HZ
CCT: 3000K/4000K/5000K
CRI: >80
POWER: 20W (2*10W)
LED OUTPUT: 1220LM
BEAM: 73°

RCM

SAA

IES

TUV

CE

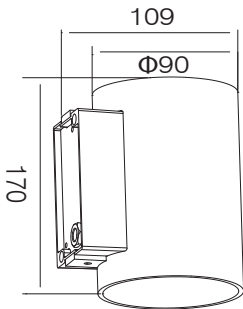
RoHS



greenlux
cost reduction LED lighting

Allure Cylinder Indoor LED Wall Light

GKALL-8W-C1



Standard Mechanical Parameters

MAIN BODY MATERIAL: ALUMINIUM DIE-CASTING
SURFACE FINISH: MW RAL 9016
IP: 20
DIMENSION: Φ90X109X170MM

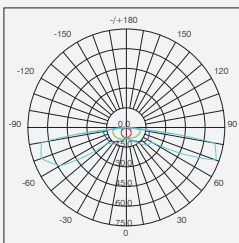
Housing Color:

- Matte White
- Matte Grey
- Matte Black

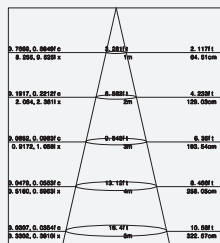


Standard Optical & Electrical Characteristics

LED BRAND: HONGLI
DRIVER BRAND: AREEK
INPUT: 110-230V AC 50/60HZ
CCT: 3000K
CRI: > 80
LED OUTPUT: 225LM
POWER: 8W (2*4W)
BEAM: 100°



GKALL-8W-C1-3000K-100°



Photometric files for other CCT & beam are available

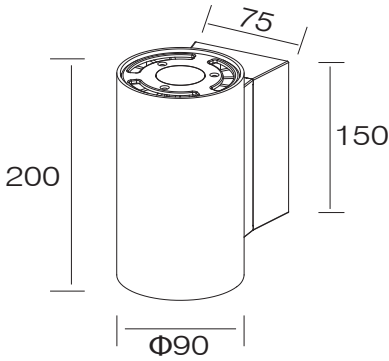




greenlux
cost reduction LED lighting

Allure Cylinder Indoor LED Wall Light

GKALL-26W-C2



Standard Mechanical Parameters

MAIN BODY MATERIAL: ALUMINIUM DIE-CASTING

SURFACE FINISH: MW RAL9016

IP: 20

DIMENSION: $\Phi 90 \times 200 \text{MM}$

Housing Color:

- Matte White
- Matte Grey
- Matte Black



Standard Optical & Electrical Characteristics

LED BRAND: BRIDGELUX

DRIVER BRAND: AREEK

INPUT: 110-230V AC 50/60HZ

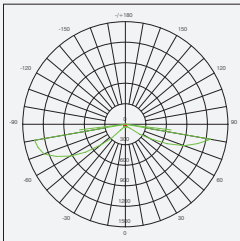
CCT: 3000K

CRI: > 80

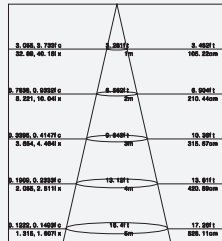
LED OUTPUT: 2000LM

POWER: 26W (2*13W)

BEAM: 25°



GKALL-26W-C2-3000K-25°



Photometric files for other CCT & beam are available

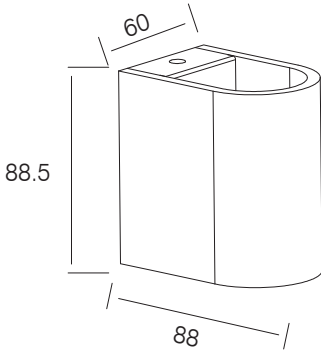




greenlux
cost reduction LED lighting

Allure Cylinder Indoor LED Wall Light

GKALL-8W-C3



Standard Mechanical Parameters

MAIN BODY MATERIAL: ALUMINIUM DIE-CASTING

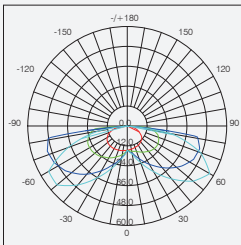
SURFACE FINISH: MW RAL 9016

IP: 20

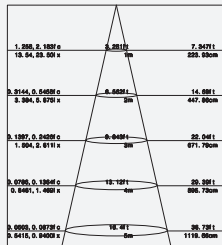
DIMENSION: 88X60X88.5MM

Housing Color:

- Matte White
- Matte Grey
- Matte Black



GKALL-8W-C3-3000K-100°



Photometric files for other CCT & beam are available



Standard Optical & Electrical Characteristics

LED BRAND: BRIDGELUX

DRIVER BRAND: AREEK

INPUT: 110-230V AC 50/60HZ

CCT: 3000K

CRI: > 80

LED OUTPUT: 420LM

POWER: 8W (2*4W)

BEAM: 100°

RCM

SAA

IES

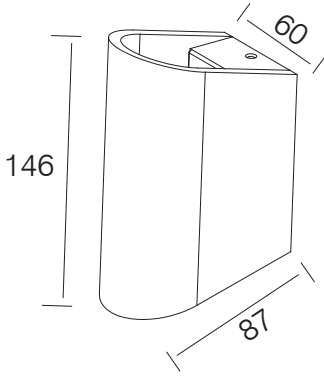
TUV

CE

RoHS

Allure Cylinder Indoor LED Wall Light

GKALL-8W-C4



Standard Mechanical Parameters

MAIN BODY MATERIAL: ALUMINIUM DIE-CASTING

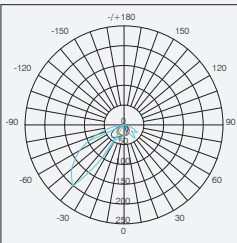
SURFACE FINISH: MW RAL9016

IP: 20

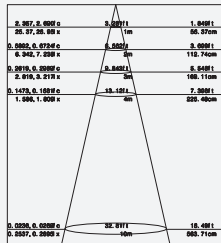
DIMENSION: 60X87X146MM

Housing Color:

- Matte White
- Matte Grey
- Matte Black



GKALL-8W-C4-3000K-100°



Photometric files for other CCT & beam are available



Standard Optical & Electrical Characteristics

LED BRAND: BRIDGELUX

DRIVER BRAND: AREEK

INPUT: 110-230V AC 50/60HZ

CCT: 3000K

CRI: > 80

LED OUTPUT: 420LM

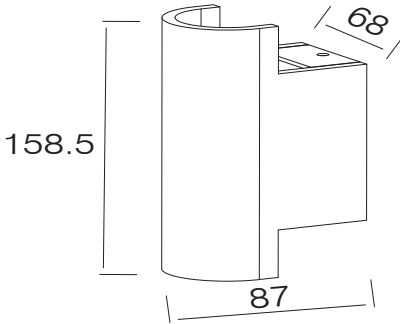
POWER: 8W (2*4W)

BEAM: 100°



Allure Cylinder Indoor LED Wall Light

GKALL-8W-C6

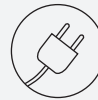


Standard Mechanical Parameters

MAIN BODY MATERIAL: ALUMINIUM DIE-CASTING
SURFACE FINISH: MW RAL9016
IP: 20
DIMENSION: 87X158.5MM

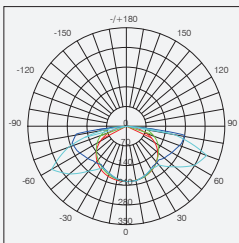
Housing Color:

- Matte White
- Matte Grey
- Matte Black

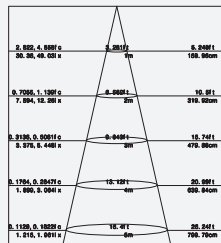


Standard Optical & Electrical Characteristics

LED BRAND: BRIDGELUX
DRIVER BRAND: AREEK
INPUT: 110-230V AC 50/60HZ
CCT: 3000K
CRI: > 80
LED OUTPUT: 420LM
POWER: 8W (2*4W)
BEAM: 100°



GKALL-8W-C6-3000K-100°



Photometric files for other CCT & beam are available

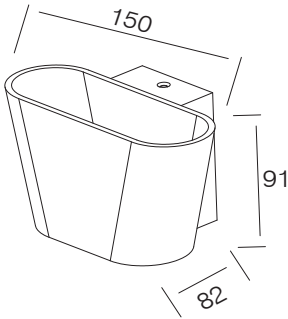




greenlux
cost reduction LED lighting

Allure Cylinder Indoor LED Wall Light

GKALL-8W-C7



Standard Optical & Electrical Characteristics

LED BRAND: BRIDGELUX
DRIVER BRAND: HEP
INPUT: 110-230V AC 50/60HZ
CCT: 3000K
CRI: > 80
LED OUTPUT: 460LM
POWER: 8W (2*4W)
BEAM: 90°

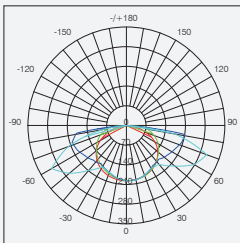
Housing Color:

- Matte White
- Matte Grey
- Matte Black

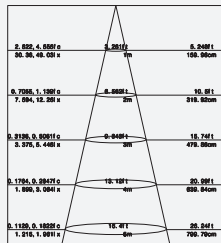


Standard Mechanical Parameters

MAIN BODY MATERIAL: ALUMINIUM DIE-CASTING
SURFACE FINISH: MW RAL9016
IP: 20
DIMENSION: 150X82X91MM



GKALL-8W-C7-3000K-100°



Photometric files for other CCT & beam are available

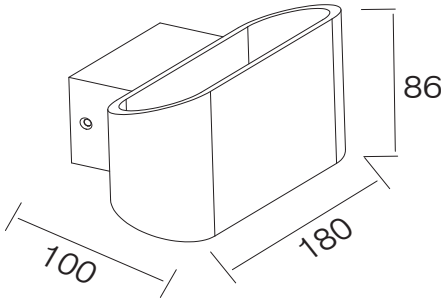




greenlux
cost reduction LED lighting

Allure Cylinder Indoor LED Wall Light

GKALL-8W-C8

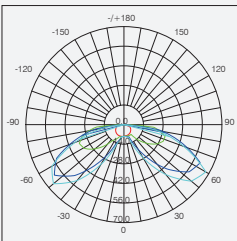


Standard Mechanical Parameters

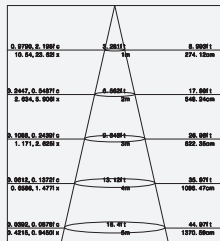
MAIN BODY MATERIAL: ALUMINIUM DIE-CASTING
SURFACE FINISH: MW RAL 9016
IP: 20
DIMENSION: 180X100X86MM

Housing Color:

- Matte White
- Matte Grey
- Matte Black



GKALL-8W-C8-3000K-150°



Photometric files for other CCT & beam are available



Standard Optical & Electrical Characteristics

LED BRAND: BRIDGELUX
DRIVER BRAND: AREEK
INPUT: 110-230V AC 50/60HZ
CCT: 3000K
CRI: > 80
LED OUTPUT: 330LM
POWER: 8W (2*4W)
BEAM: 150°





greenlux
cost reduction LED lighting

Vantage Series 01 LED Indoor Wall Light

GCVAN-8W-01-A
GCVAN-8W-01-B

- No UV or IR rays. No mercury
- High Quality SMD Chipset
- High Lumen Output 760lm
- High Quality Aluminum Polished Chrome Housing
- 360° beam angle
- IP44 Rated
- 3 Years Warranty
- Applications include offices, cafes, restaurants, hotels, shopping centres & households



A



B

Specifications

Colour Range	3000K / 4000K / 5000K
Luminous Flux	760lm
Power Consumption	8W
Input Voltage	AC 100V~240V
Beam angle	360°
Ra	>85
Power Factor	>0.95
Chipset	SMD
Driver	Class II

Dimensions & Materials

Product Dimensions (mm)	A 100 * 160 * 125
	B 100 * 140 * 25

Housing Material	Aluminum Polished Chrome
-------------------------	--------------------------

Certification and Safety

Certifications	IP44, CE, RoHS, SAA, RCM
Environment	Indoor Location
Warranty	3 years





greenlux
cost reduction LED lighting

Vantage Series 02 LED Indoor Wall Light

GCVAN-8W-02

- No UV or IR rays. No mercury
- High Quality SMD Chipset
- High Lumen Output 720lm
- High Quality Aluminum Polished Chrome Housing
- 60° beam angle
- IP20 Rated
- 3 Years Warranty
- Applications include offices, cafes, restaurants, hotels, shopping centres & households



Specifications

Colour Range	3000K / 4000K / 5000K
Luminous Flux	720lm
Power Consumption	8W
Input Voltage	AC 100V~240V
Beam angle	60°
Ra	>85
Power Factor	>0,95
Chipset	SMD
Driver	Class II

Dimensions & Materials

Product Dimensions (mm)	140 * 126 * 140
Housing Material	Aluminum Polished Chrome
Housing Colour	White

Certification and Safety

Certifications	IP20, CE, RoHS, SAA, RCM
Environment	Indoor Location
Warranty	3 years





greenlux
cost reduction LED lighting

Notte Series Indoor LED Wall Light

GONOT-20W

- No UV or IR rays. No mercury
- Replaces traditional Outdoor Wall Lights
- High lumen output 95lm/W
- High quality SMD chipset
- High quality Aluminium Housing
- IP20 & IP40 Rated
- 3 Years Warranty
- Applications include sheltered & outdoor areas such as corridors, walkways for hotels, clubs, museums, exhibition centres & household



Specifications

Colour Range	3000-6000k
Luminous Flux	1900lm
Power Consumption	20W
Input Voltage	100 ~ 240V AC 60Hz
Operating Temp.	-20°C to 50°C
Beam angle	120°
CRI	>80
Chipset	SMD
IP Rating	IP20 & IP40

Dimensions & Materials

Product Dimensions (mm)	600*100*125
Housing Material	Aluminium + Opal Diffuser
Housing Colour	Silver





greenlux
cost reduction LED lighting

LM80

RoHS

RCM

SAA

IP65

TUV

CE

3 Yrs
Warranty

LED Indoor Wall Light Catalogue

GREENLUX

YOUR COST REDUCTION PARTNER

GREENLUX LED LIGHTING has been delivering quality lighting outcomes successfully to commercial sites nationally for the past 9 years. The parent company Innovative Digital Displays Pty Ltd has been trading for over 28 years. We have substantial experience in the manufacture and development of quality commercial LED lighting products. We have our own manufacturing facilities which mean we can deliver high quality product at extremely competitive pricing.

CONTACT US

www.greenlux.com.au
sales@greenlux.com.au
info@greenlux.com.au

MELBOURNE

9/331 Ingles Street, Port Melbourne
VIC 3207 Australia
T 1300 650 625 or +61 3 9646 8331

SYDNEY

Unit 1, 6-8 George Place Artarmon
NSW 2064 Australia
T 1300 650 625

QUEENSLAND

Unit 1, 16 Millaroo Dr Helensvale
Qld, 4212 Australia
T 1300 650 625

