

Chain GLR 11376 Series **Recessed** LED Linear Light



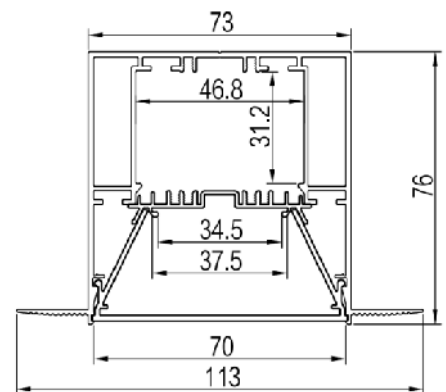
UGR<19

120LM/W



Features

- Professional optical design with two diffusers and four types of light sources
- Up to 120lm/w light efficiency (DC24V, with diffuser)
- UGR<19 (with UGR filter diffuser)
- Plug and connect design with innovative magnetic end cap
- No need to punch holes by pressing the carrier with snap joint easily
- Connect more easily by tightening and screwing from the front
- Create any lighting sculpture freely by the five kinds of corners
- Cord master design & built-in driver for extreme extension



RCM

SAA

IES

TUV

CE

3 Yrs
Warranty

LM80

IP20

Chain GLR 11376 Series Recessed LED Linear Light

Details



Standard Configuration

① Profile ② Carrier:

Installation: Recessed without trim
 Material: AL6063-T5
 Applications: Indoors
 Profile weight: 4.53kg/2.5m
 Size: L2500*W113*H76mm
 Surface processing: Anodizing



③ Diffuser:

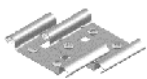
Type: Frosted diffuser/UGR filter diffuser
 Material: PC/PC&PET
 Light transmittance : 85%/75%
 Size : L2500*W70.6*H31mm
 PC Feature : The diffuser will extend (shrink) 0.8mm/m when the temperature rises (drops) 10°C.



④ End cap

L113*W77.3*H18.2mm

Fireproof PC& magnet



⑤ Snap joint accessories

L46.5*W30*H6.5mm

304 Stainless steel

⑥ surface—mounted

M3.5*40mm




Carbon steel



⑦ Accessories

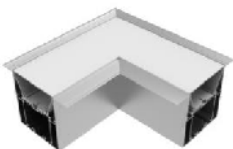
Chain GLR 11376 Series **Recessed** LED Linear Light

Optional Accessories

	⑨ N-type buckle	GCSPPC silver	L112.7*W77.4*H84mm				
	⑩ driver	GCESD-V24-065S	L363*W34.5*H22.5mm				
	⑧ FPC	GCD8320H-34mm	DC24V	20W/m	width 34mm	Min. cutting unit 50mm	
		GCD8320L-34mm	DC24V	17W/m	width 34mm	Min. cutting unit 50mm	
	⑧ Rigid modular	GCDY8320H-37mm	DC24V	20W/m	width 37mm	Min. cutting unit 50mm	
		GCDY8320L-37mm	DC24V	17W/m	width 37mm	Min. cutting unit 50mm	

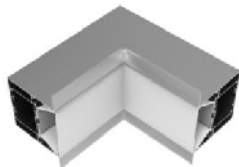
Corners

L-type corner (L90-GLE11376)



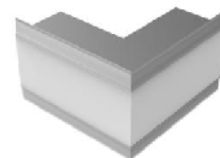
Al6063-T5&PC
 5.5W/4.7W
 193*193*76mm

L-type inner corner(L90N-GLE11376)



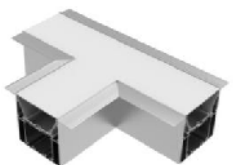
Al6063-T5&PC
 5W/4.2W
 176*176*113mm

L-type exterior corner (L90W-GLE11376)



Al6063-T5&PC
 7W/6W
 180*180*113mm

T-type corner (T90-GLE11376)



Al6063-T5&PC
 7.5W/6.4W
 273*193*76mm

X-type corner (X90-GLE11376)



Al6063-T5&PC
 10W/8.5W
 273*273*76mm

180° extender

SPCC
 silver

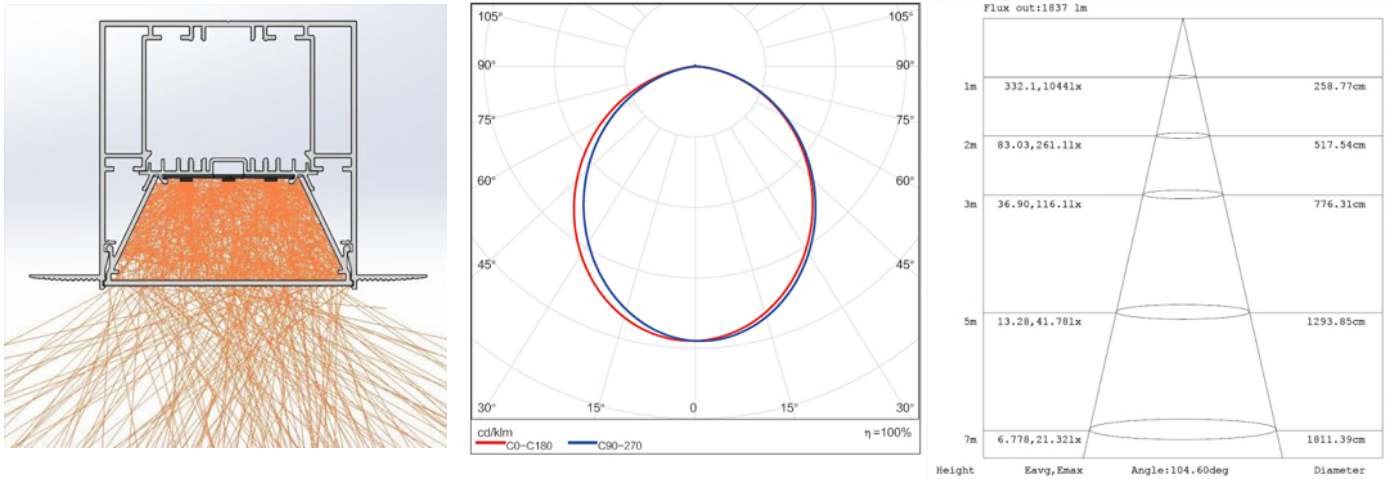
* There are both with light source and without light source options for the five kinds of corners.

* There are optional high lumen and standard lumen for corner power.

Chain GLR 11376 Series **Recessed** LED Linear Light

Optical Parameter

GCD8320H-34mm driver, frosted diffuser



GCD8320L-34mm driver, UGR filter diffuser

