

## Opal PL-I Series

### LED Intelligent Panel Light





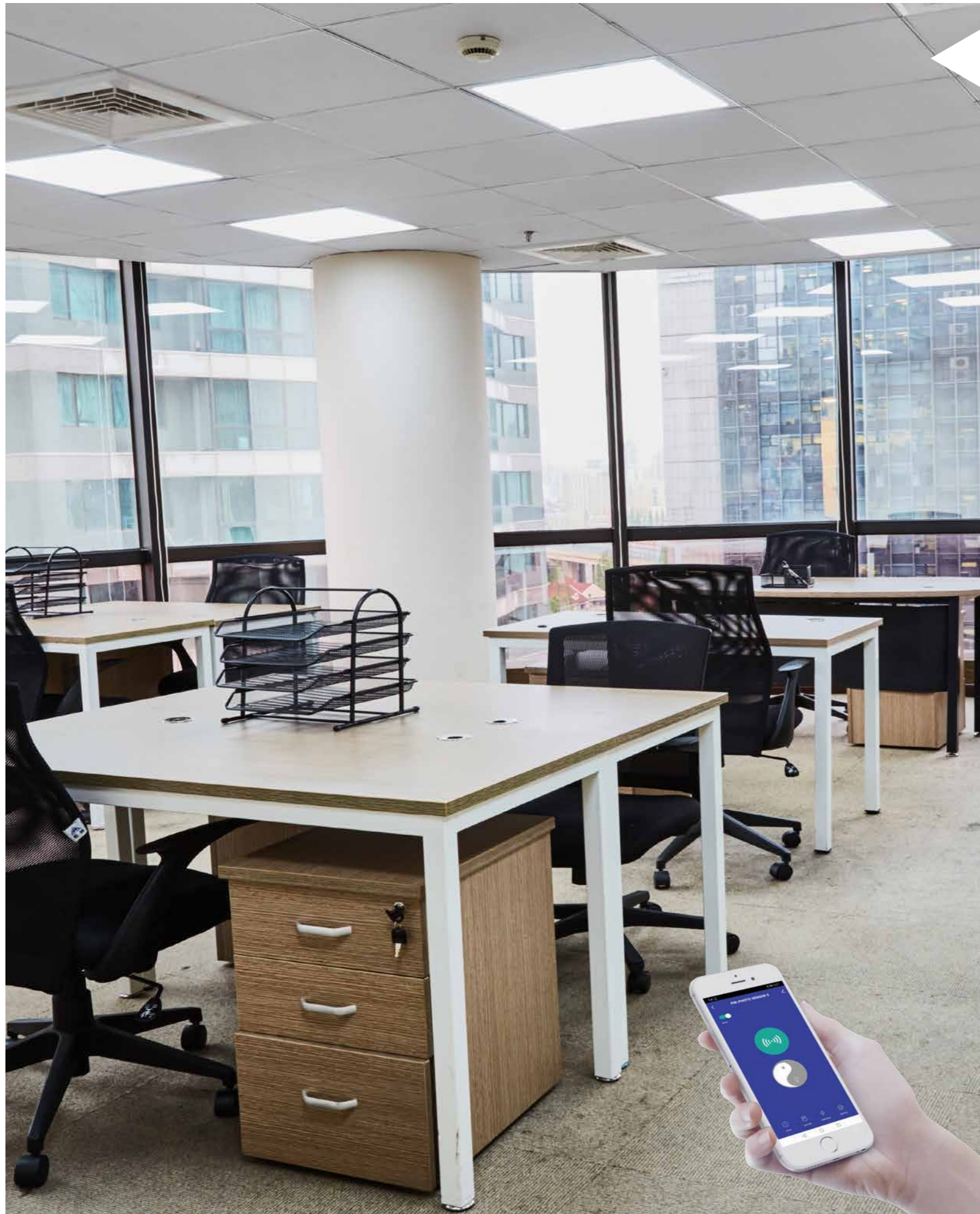
## Tuya Smart

### Function description

- Adjustable colours for selection
- Control it remotely via smartphone App
- Freely select any lighting scenes
- Energy saving achieved with programmable scheduling function







## Introduction

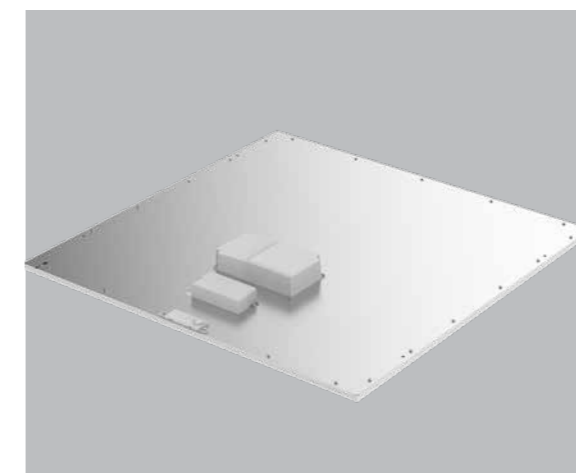
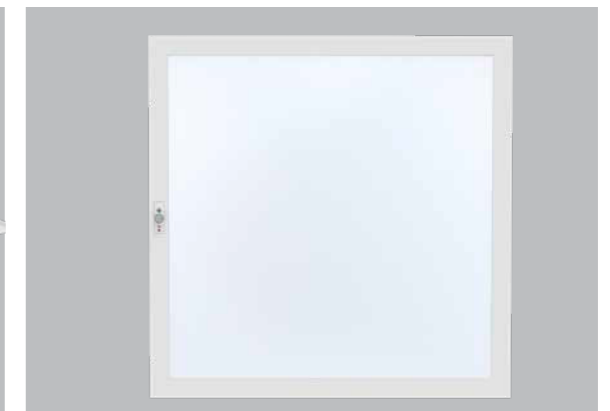
The Intelligent panel light is a key energy-saving strategy for commercial spaces. It is comprised of driver, smart control module and induction module. Users can simply control the lamp by using the mobile phone APP and Bluetooth connection. Users can adjust the brightness and colour temperature of the lamps according to their own needs. Automatic light supplement can also operate by photosensor. The PIR sensor is used to switch the lamp, and the indicator light is used to display the ON/OFF state of the photosensitive sensor and PIR sensor of the lamp.

## Features and Advantages of Bluetooth Mesh Networking

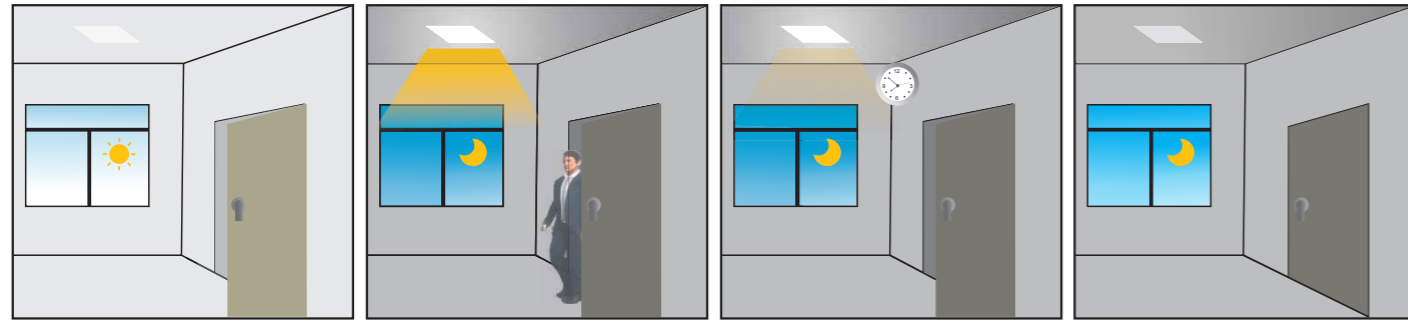
- Smart dimming : The brightness can be adjusted automatically according to the ambient light intensity which collected by photosensor.
- PIR sensor: It can be controlled by the infrared body sensor. The light will turn on automatically when human body goes to the detective area, and will dim down gradually after people leave. Then it will turn off if no detection within the set time period.
- The mobile phone APP can adjust the brightness, colour temperature, ON/OFF state of the photosensor and PIR sensor.

## Application Areas

Office & school lighting: office room, meeting room, class room etc.  
Commercial lighting: shopping mall, super market, retailer shops etc.  
Other situations: hospital, laboratory, dust-free workshop etc.

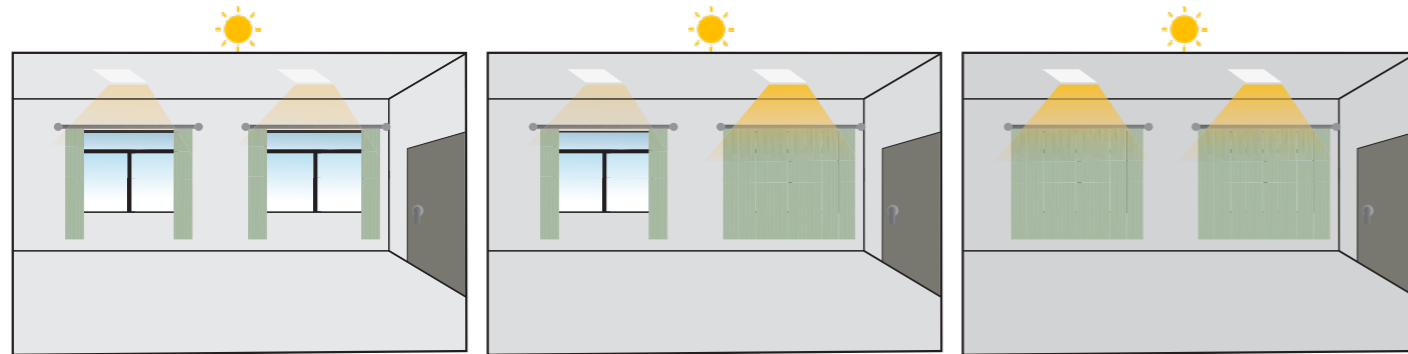


### PIR sensor



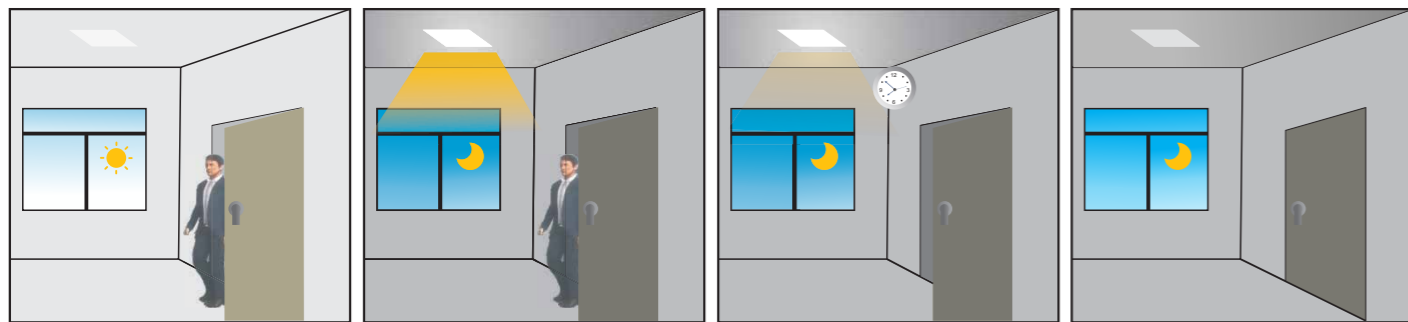
1. If no human movement is detected, the lamp will keep off status.
2. If human movement is detected, lamp will turn on and keep a setting lux.
3. If someone left the detection area after the hold time, the lamp will enter into a second lux (lower setting lux).
4. If no human movement is detected within the second lux hold time, the lamp will turn off.

### Photosensor



The lamp will adjust the brightness automatically according to ambient light. If ambient light is strong, the lamp will adjust to a lower lux; if the ambient light is low, the lamp will adjust to a stronger lux.

### PIR+Photosensor



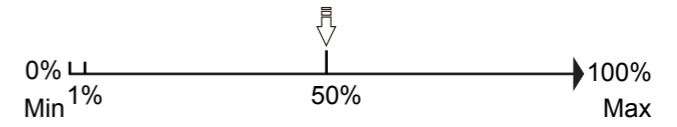
1. If ambient light is sufficient, lamp keeps OFF status.
2. If ambient light is insufficient, lamp will turn on photosensor setting lux when motion is detected.
3. After someone left the detection area, the lamp will dim to a lower lux within hold time.
4. After the hold time, the lamp will turn OFF.

### Highlights

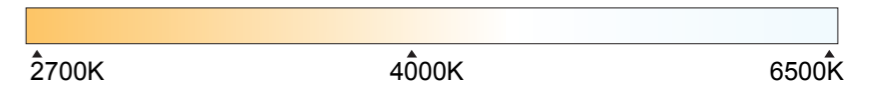
- Sensor Switch



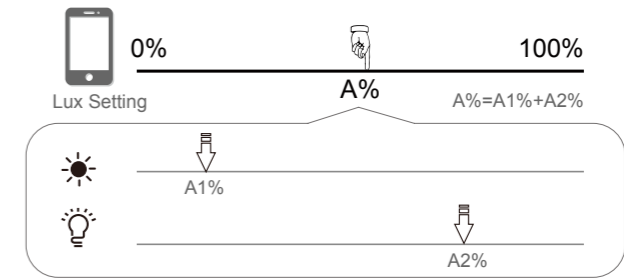
- Brightness Adjustable



- CCT Adjustable



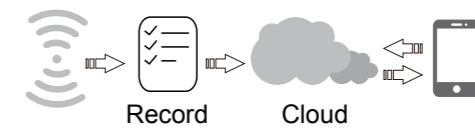
- Daylight sensor



- Time setting



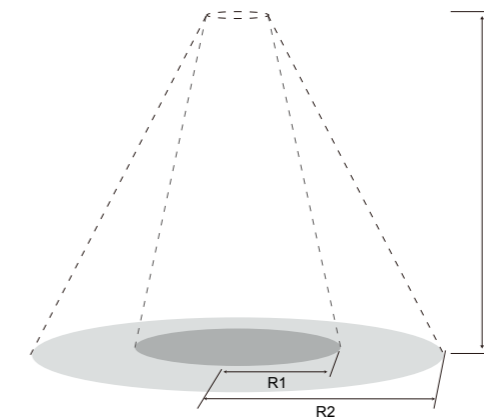
- Record



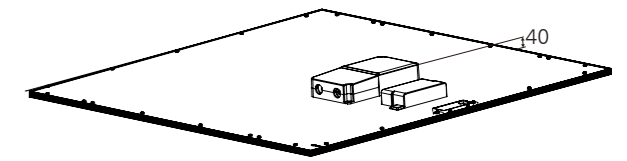
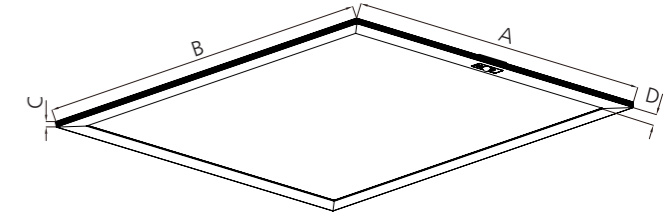
- Electricity consumption



- Distance Adjustable



Height	Minor Movement	Major Movement	Grade
	3m	R1	
	2m	2.5m	High
	1.2m	1.8m	Middle
	0.6m	1m	Low



## Technical Data Sheet

Model No.	GUOPA-40W-6060-I	GUOPA-40W-6262-I	GUOPA-40W-1230-I
Dimension(mm)	595*595*8.5	620*620*8.5	1195*295*8.5
Cutout (mm)	-		
Watt(W)	40W		
Rated Input Voltage(V)	AC200-240V		
Input Voltage(V)	AC180-265V		
LED Module Input	-		
Light Source	4014 SMD		
SDCM	-		
CCT(K)	CCT: 2700K-6500K		
CCT Selection	Signal Control		
Luminous Flux (lm) ±5%	3300-4000LM		
CRI	≥80 (≥90 Optional )		
Beam Angle (°)	90°		
UGR	<19		
LED Driver	Built-out		
Dimming Option	Signal Control		
Sensor	YES		
Emergency Kits	-		
Electrical Class	ClassII		
Ingress Protection (IP Rating)	IP20		
Impact Resistance (IK Rating)	-		
Product Finishing(Base)	White RAL 9016		
Materials of Optics	PMMA		
Materials of Housing	Aluminum (Frame)+PMMA(LGP)		
Lifetime (hr)	40,000h		
Glow wire test (°C)	650°C		
Operating Temp. (°C)	-10°C ~40°C		
Storage Temp. (°C)	-20°C ~50°C		
Installation	Surface mount/ Pendant/ Recessed		

## Measurement

Code	Dimension(mm)				Size(mm)	Product Weight (Kg)	
	A	B	C	D		N.W/PC	G.W/PC
GUOPA-40W-6060-I	595	595	8.5	32	595*595*8.5	3.1	15.5
GUOPA-40W-6262-I	620	620	8.5	32	620*620*8.5	3.5	17.5
GUOPA-40W-1230-I	1195	295	8.5	32	1195*295*8.5	3.1	15.5

## Driver Datasheet (Dimmable)

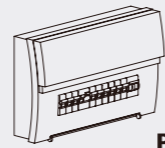
Total load wattage		40W
Output	Output Voltage range	30-40V
	Rated output current	1000mA±5%
	Line Regulation	±5%
	Setup, Rise Time	≤0.5S@230V
	Flickering Index	5%; IEEE1789 NO RISK
Input	Input Voltage	AC180-265V
	Rated Input Voltage(V)	AC200-240V
	Frequency	50/60HZ
	Input Current	0.25A
	Rated Input Current	0.23A
	Power Factor	0.9
	THD	<20%
	Efficiency	≥86%
	No load wattage	≤0.5W
Protection	Short circuit protection	Pass
	Over voltage protection	Pass
	Over temperature protection	-
Safety & EMC	Withstand voltage	I/P-O/P:3.75KVac, <5mA 60S;
	Isolation Resistance	I/P-O/P: 500VDC, ≥100M Ω
	Surge	IEC61000-4-5(L-N:1KV)
	EMC Emission	EN55015, EN61000-3-2
	EMC Immunity	EN61000-4-2,3,4,5,6,8,11; EN61547



## Installation Procedure

### WARNING

1. Switch off before installation.
2. Switch on only after completing installation and examination of the circuit.



Turn Off  
Power Supply

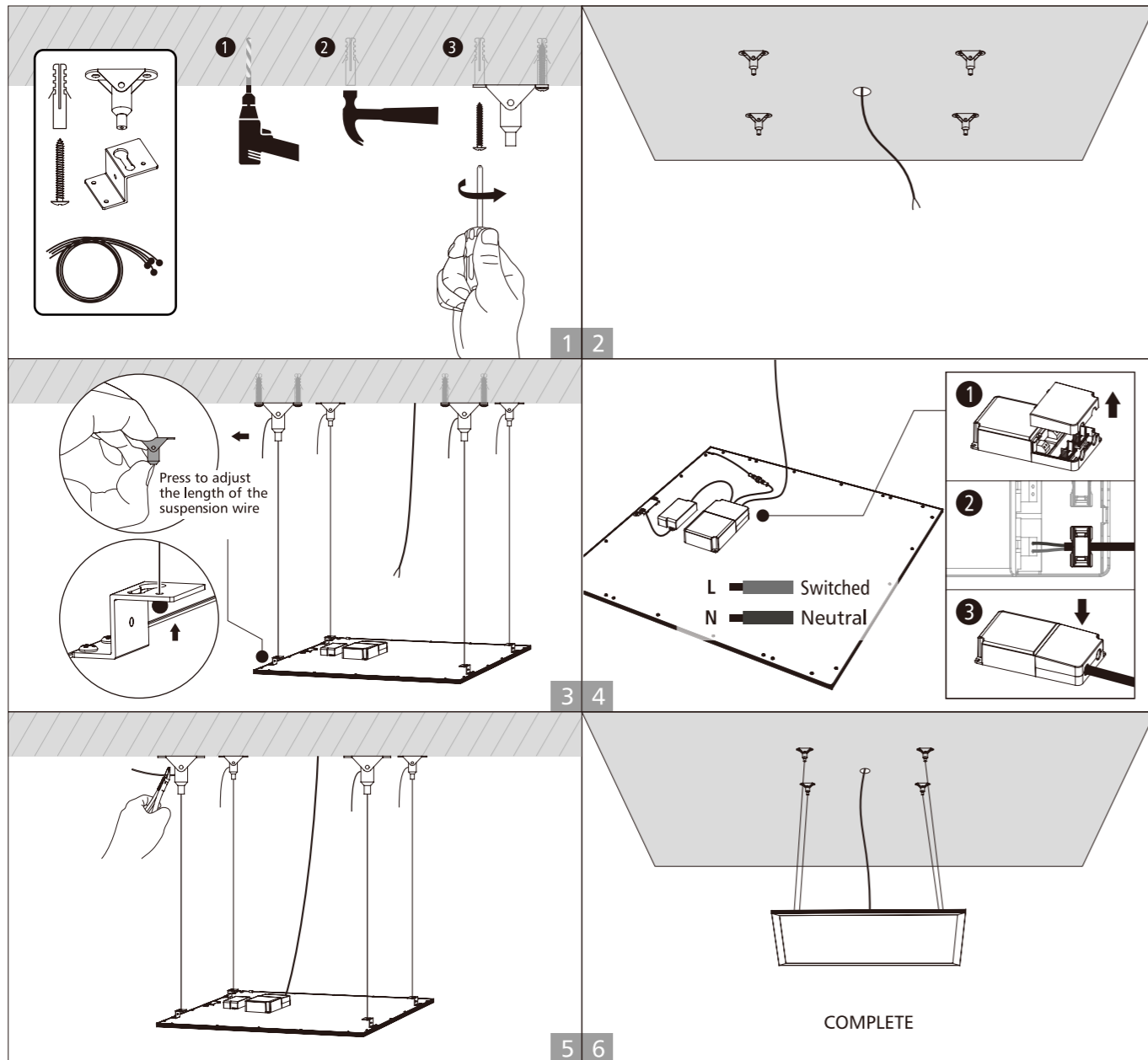
### CAUTION

Make sure that the mounting surface or structural member used for installation can support the weight of LED Panel.

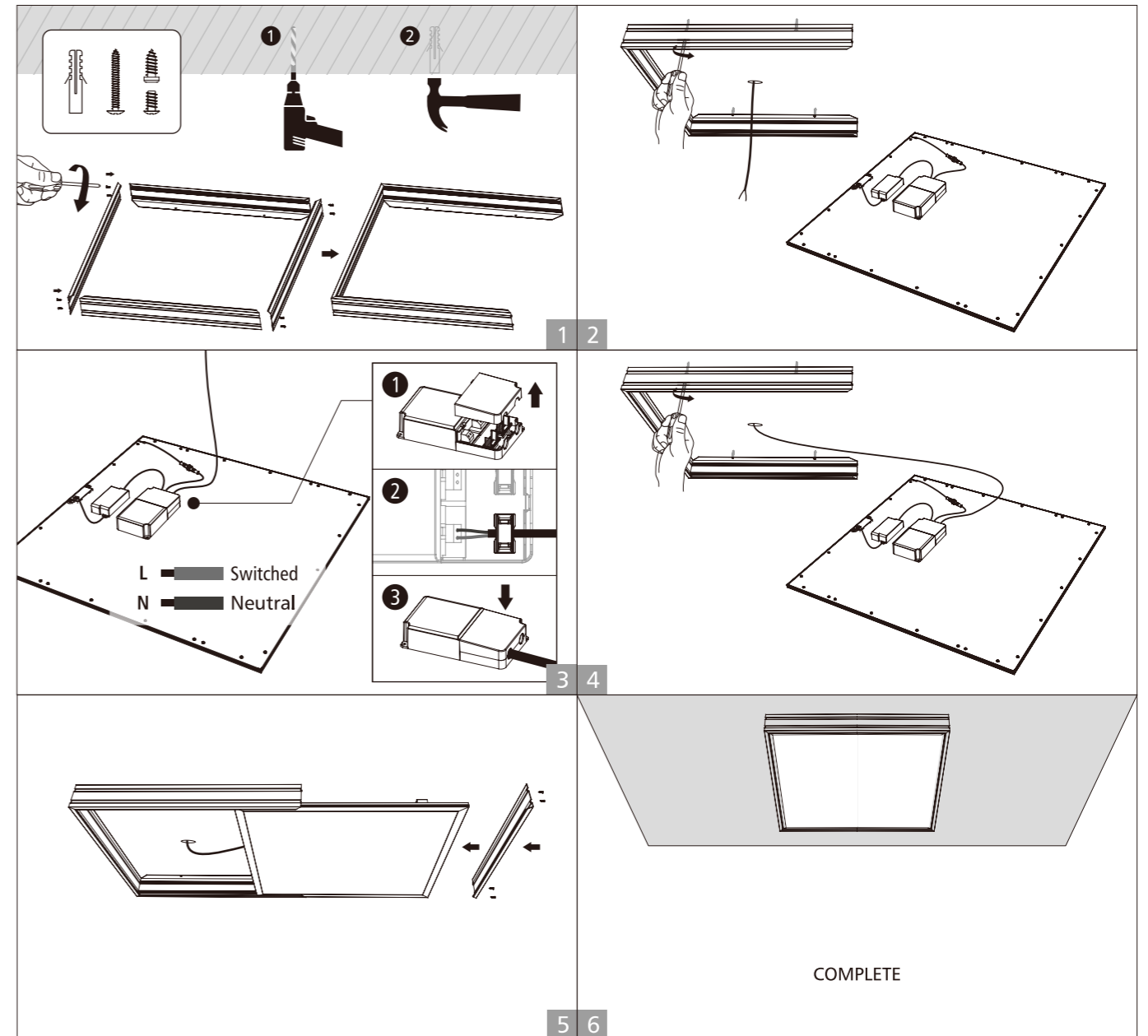
For colour changeable model (controlled by Slide Switch in lamp), please select light colour before installation, see below picture. choose colour by slide switch with corresponding colour temperature.



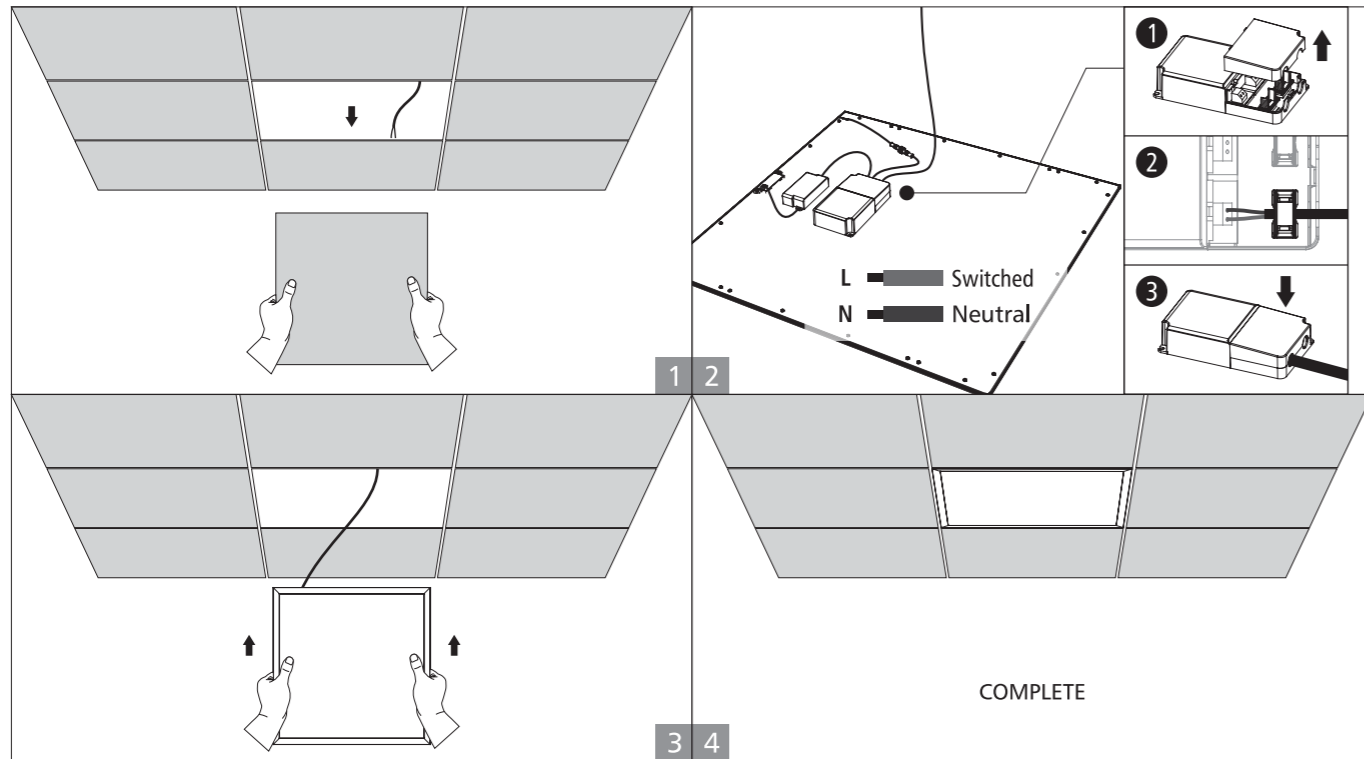
## Suspended installation



## Surface mounted installation



## Recessed installation(1)



## Recessed installation(2)

